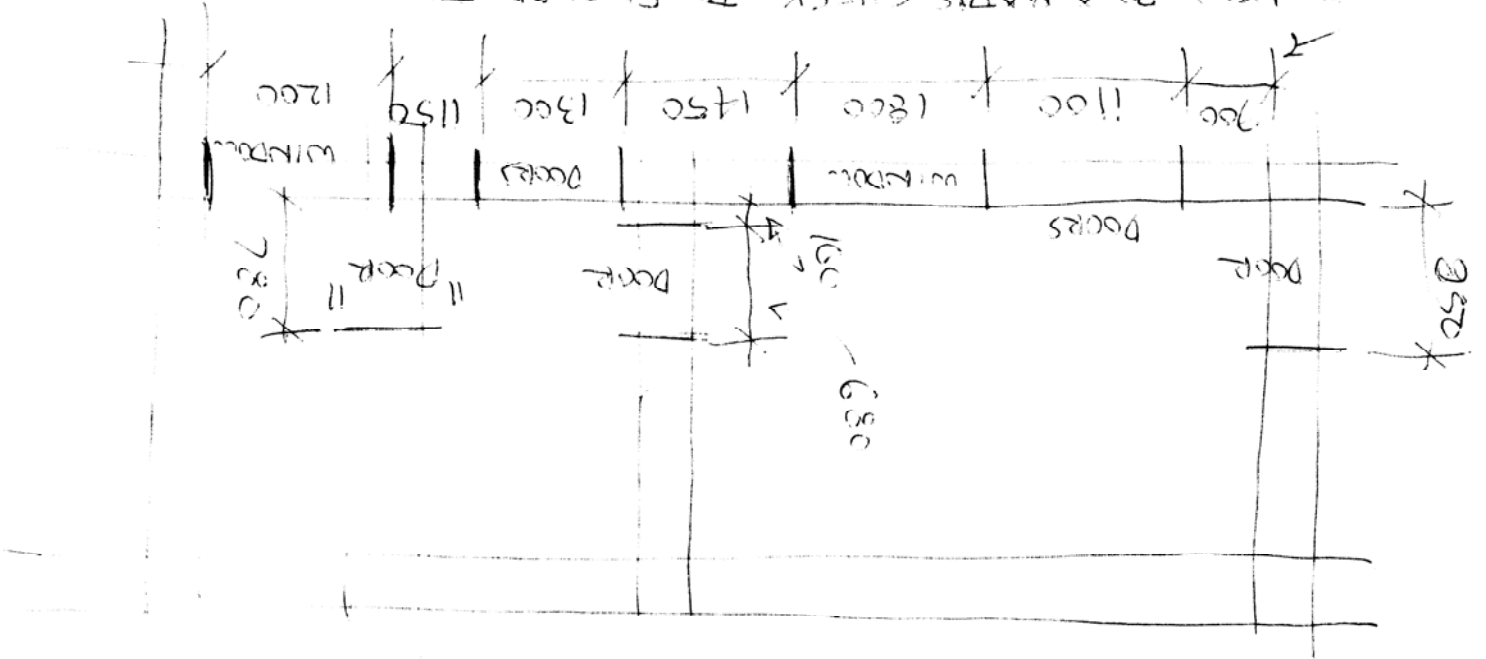
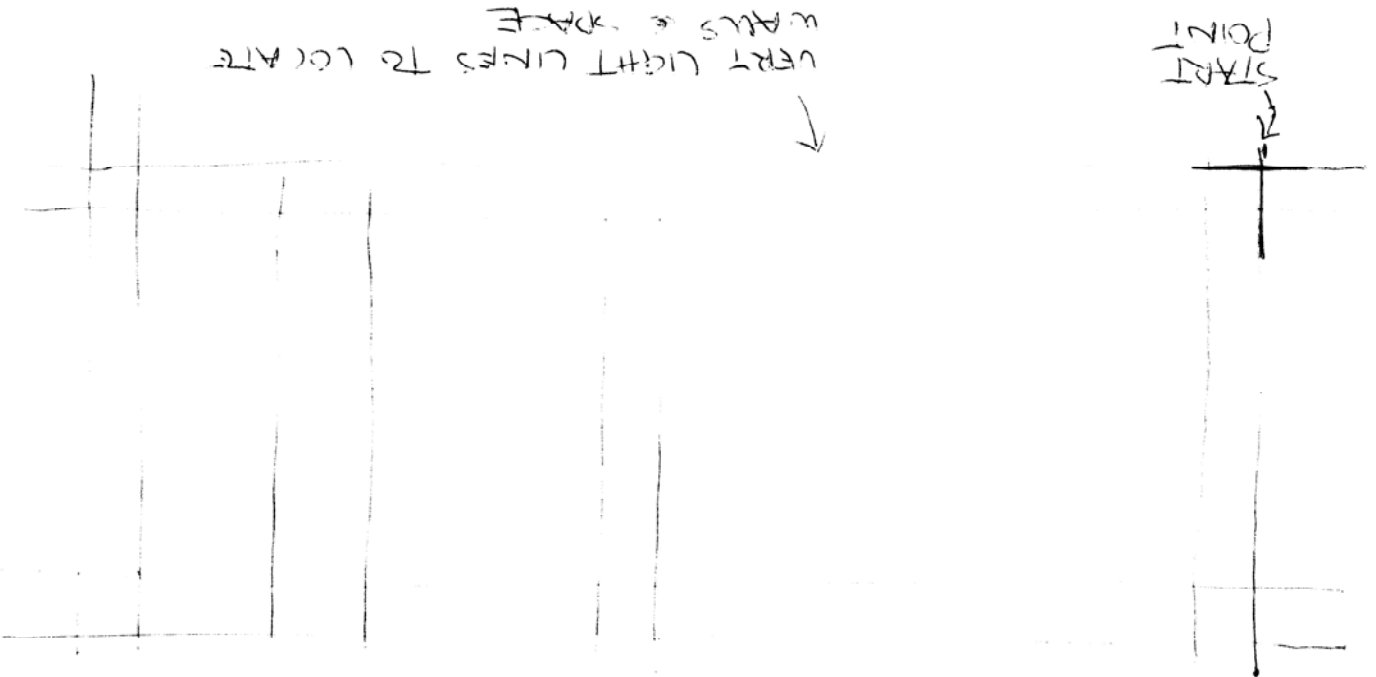


NOTE DO A MATHS CHECK TO ENSURE THESE DIMENSIONS ARE CORRECT COMPARED WITH OVERALL DIMENSIONS.



**5. LOCATE WINDOWS & DOORS**  
 From the measured drawing information now mark out where the windows are in the external walls, then the doors in both internal and external walls in VERY LIGHT LINES.



**4. OUTLINE WALLS**  
 Using VERY LIGHT LINES, measure and mark-out each of the spaces and walls at 1 : 20 scale and draw lines to represent these walls.  
 Do not even think of anything else at this time except the walls and spaces.