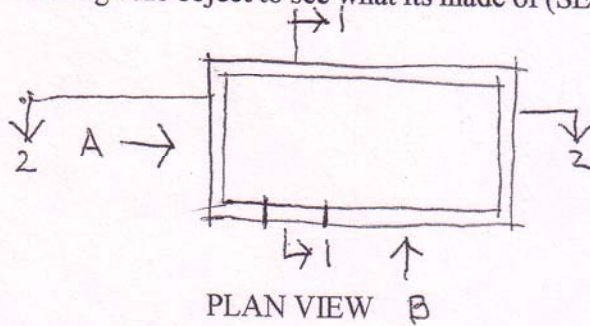
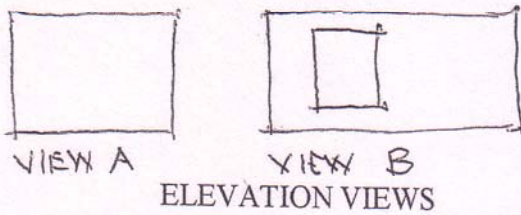


#### 4 ORTHOGRAPHIC PROJECTION

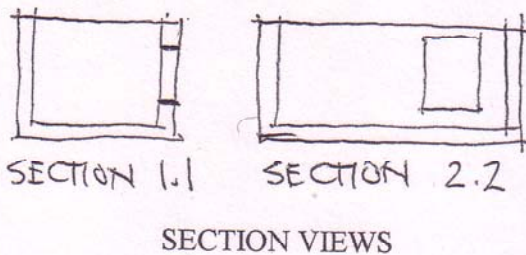
This is an unusual way for us to start looking at objects as we are used to seeing in 3D and in this view, we do a "Google" and look down directly on top of the shape (PLAN VIEW), as well as a separate drawing looking square-on to each side (ELEVATION VIEW) and even cut through the object to see what its made of (SECTION VIEW).



the sides are parallel and are shown true size and angles are true (I'll show you some occasions where this is not so....so watch this space!



the sides are parallel and heights are shown true size and most angles are again true



This shows what is happening inside the object. The objects cut through are shown in dark lines and objects seen beyond are lighter lines

I will demonstrate how these are set up and how to draw them in class so I want you to:

- A watch how I do this,
- B ask questions (so I can repeat the ideas) until you KNOW what to do,
- C answer my questions (so I can check that you are following and understanding. This is MOST IMPORTANT) as you will be using the ideas here in ALL your future drawings and designs.

Its a "piece of cake" really.....but sometimes "Rock-cake" so make sure you ask for my help when needed.

Alan Linklater..teacher